

**SPECIFICATIONS:**

规格:

**1. ELECTRICAL CHARACTERISTICS:**

电气特性:

**1-1. RATING:**

等级:

**1-2. CONTACT RESISTANCE:** 30MΩ MAX. (INITIAL)

接触电阻: 最大30MΩ (初始)

**1-3. DIELECTRIC WITHSTANDING VOLTAGE:** 500V AC FOR ONE MINUTE

介质耐受电压: 500V AC FOR ONE MINUTE

**1-4. INSULATION RESISTANCE:** 100MΩ MIN. MEASURED BY 500V DC

绝缘电阻: 500V直流电测得的最小值为100MΩ

**2. MECHANICAL CHARACTERISTICS:**

机械特性:

**2-1. INSERTION FORCE:** 0.3~3.0 KGF

插入力: 0.3~3.0 KGF

**2-2. WITHDRAWAL FORCE:** 0.3~3.0 KGF

拔出力: 0.3~3.0 KGF

**3. UFE TEST:** 5,000 CYCLES MIN.

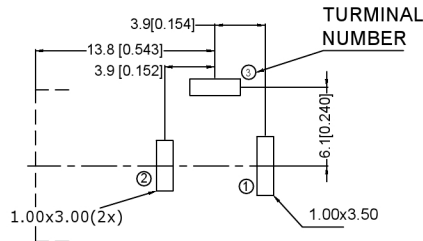
UFE试验: 至少5000次循环。

**4. FOR REFLOW SOLDERING LEAD-FREE PROCESS.**

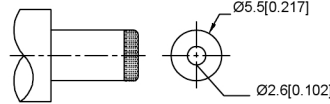
用于回流焊无铅工艺。

**5. REPRESENT CRITICAL DIMENSIONS.**

表示关键尺寸



**TURMINAL NUMBER**



**MATING PLUG**

Jack Insertion Depth: 9.0 mm

SCHEMATIC	
Model	DC-005
Center Pin	1.65
	2.0
	2.5

	MATERIAL	PLATING
center pin	Brass	tin
terminal 1	Brass	tin
terminal 2	Sus	tin
terminal 3	Brass	tin
plastic	Pbt	

广东星坤科技股份有限公司

生效日期	日期
文件工程章	

MARK	DESCRIPTION	REVISIONS	DATE	REVISED	APPROVED	UNSPECIFIED TOLERANCES
ANGLAR						±5°
X.X						±0.2mm
X.XX						±0.1mm
X.XXX						±0.05mm

DSND		DATE		SCALE: N/A	MODEL TYPE: DC POWER JACK	
DWN		DATE		VIEW:	PART NO.:	
CHKD		DATE		UNIT: mm/in	DWG NO.:	
APPD		DATE		SIZE: A4	DC-005-2.5A-2.5	
XKB INDUSTRIAL PRECISION CO., LIMITED				WEIGHT	SHEET	REVISION
				1.0g	1/1	A0